

**Tromet<sup>336</sup>**

**Tromet<sup>336</sup> - regeneracja chłodnic zabytkowych**

**+48 603 942 131**

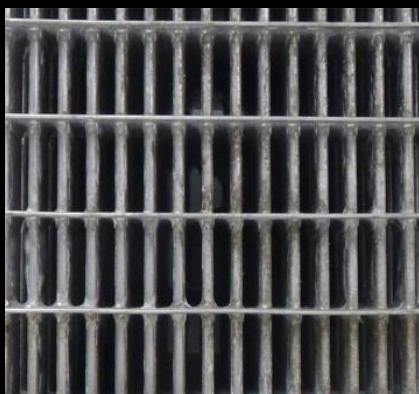


**Rdzenie chłodnic zabytkowych**

**Rdzenie lamelowe**

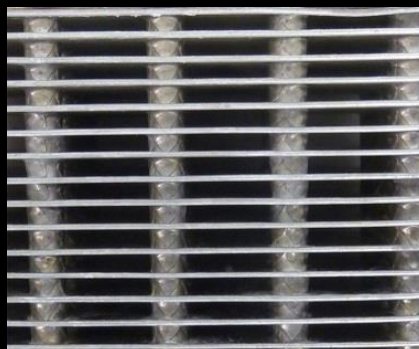
L010  
**Adler**

Najczęściej stosowany w:  
Pojazdy niemiecki do 1920



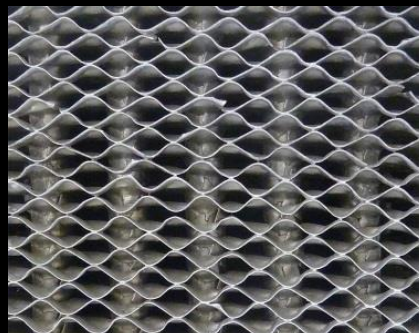
L011  
**T-FORD**

Najczęściej stosowany w:  
Ford, Dodge, Cadillac, Durant itp



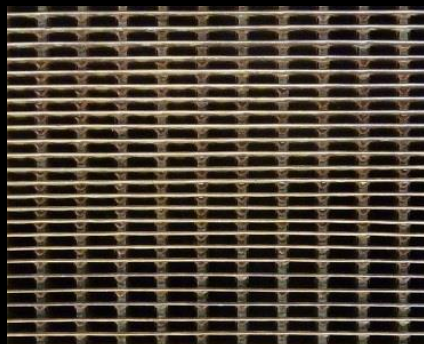
L012  
**C4**

Najczęściej stosowany w:  
Francuskie marki od 1925 - 1940



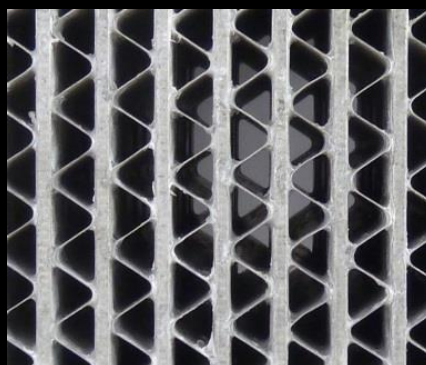
L013  
**Rdzeń lamelowy**

ok. 50 wariantów



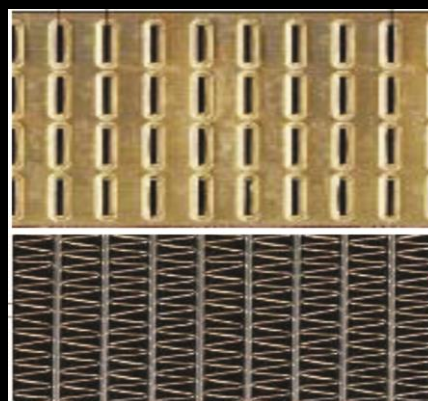
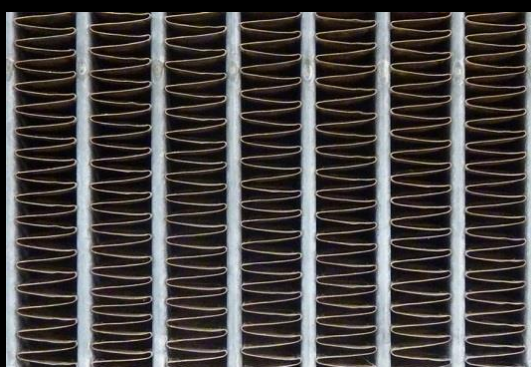
### MCCORD010

Wczesne opracowanie systemu S-Fine



### MCCORD011

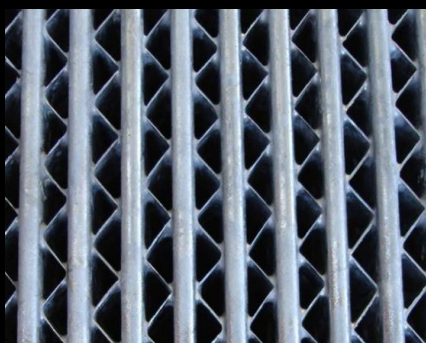
Wiele wykonañ



### MCCORD012

CALCOTT

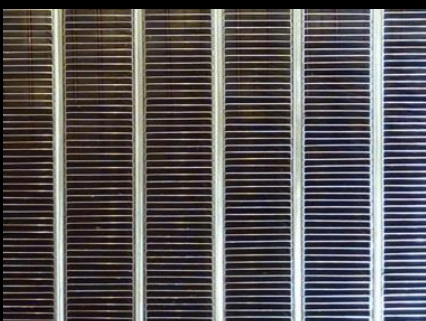
Najczęściej stosowany w:  
Calcott



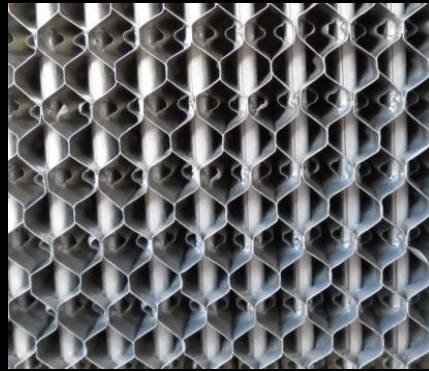
### MCCORD013

Delarge

Najczęściej stosowany w:  
Delarge



MCCORD014



MCCORD015



MCCORD016  
Rippenrohrnetze

